

CLADDING HEAD 200/60 QBH

P/N: 020038

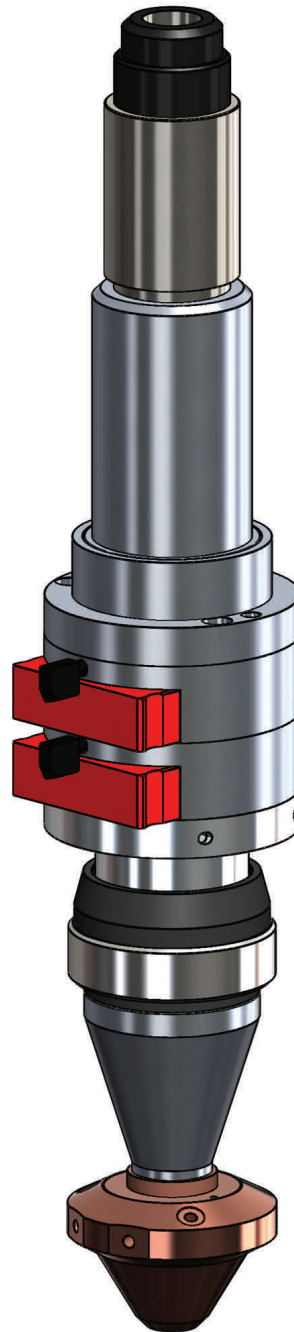
FEATURES

- 1.4"/35mm Clear Aperture
- Vernier Adjustable Focus Control
- Direct Cooled Coaxial Cladding Nozzle
- Indirect Lens Cooling
- Protective Lens
- Lens Cartridge System
- Orthogonal Lens Centering
- Modular Components
- Aluminum Construction
- No Special Tools Required
- QBH Fiber Collimator for IPG, Trumpf & Rofin-Sinar (Optional)
- Beam Analyzer (Optional)
- Through the Lens Viewing (Optional)

SPECIFICATIONS

- Lens Diameter: $\varnothing 1.5"/38.1\text{mm}$
- Focal Length: 200mm
- Cooling/Assist Ports: 1/8 NPT/M5

American Laser Enterprises, LLC.
PO Box 309
Novi, MI 48376
Phone: 248-449-3714
Fax: 248-449-7631
Email: info@a-l-e.net
Web: a-l-e.net



"A Cut Above The Rest"

