

BEAM BENDER Ø1.5" (1.0" CA)

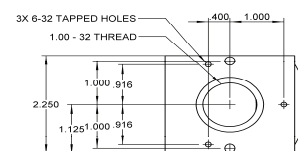
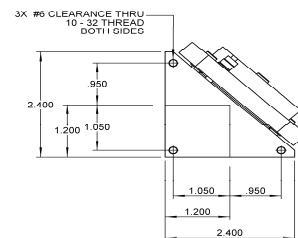
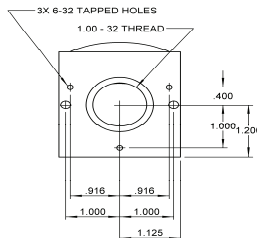
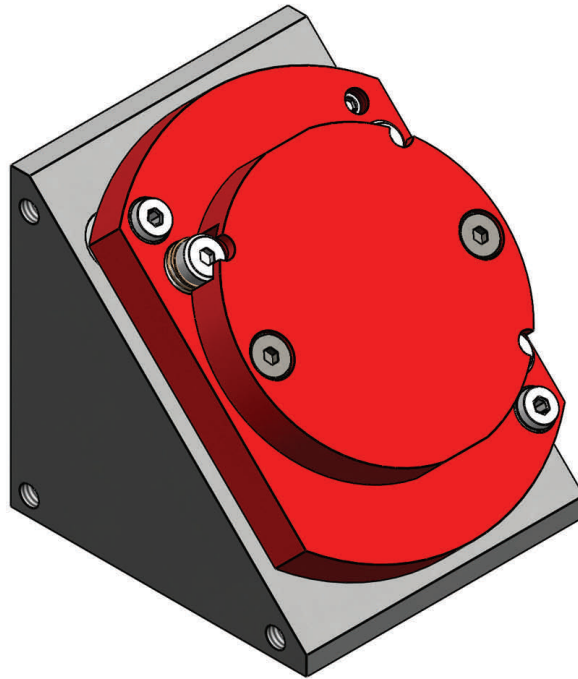
P/N: 080150-A

FEATURES

- 1.0"/25.4mm Clear Aperture
- Orthogonal Adjustable Mirror $\pm 2^\circ$
- Input, Output & Side Mounting
- Precision Adjustment Screws (Wrench or Thumb Style)
- Indirect Mirror Cooling
- Easy Mirror Replacement
- Aluminum Construction

SPECIFICATIONS

- Mirror Diameter: Ø1.5"/38.1mm
- Cooling Ports: 10-32
- Weight: .79 lbs./.358 kg



American Laser Enterprises, LLC.
PO Box 309
Novi, MI 48376
Phone: 248-449-3714
Fax: 248-449-7631
Email: info@a-l-e.net
Web: a-l-e.net