



# SPOT-IT ELECTRONIC ALIGNMENT SYSTEM

P/N: 190035

## FEATURES

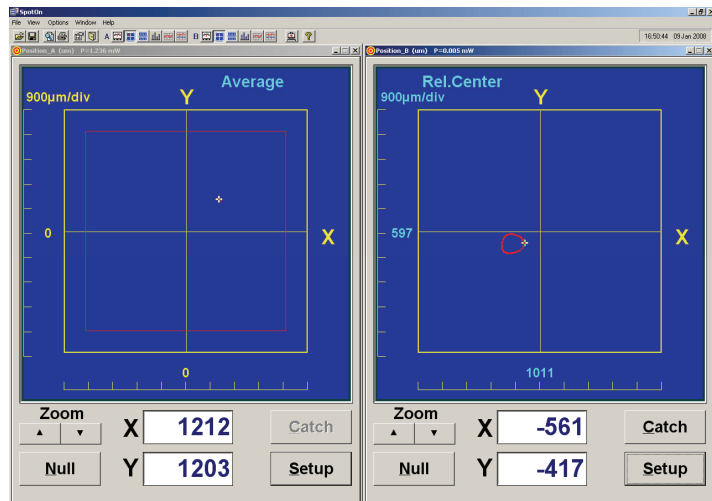
- Adaptable to Any Beam Delivery System
- Single Person Beam Alignment System
- USB Powered Input
- Connects to PC
- Measures Centration and Displacement
- Records Beam Drift and Fluctuations
- RS232 Data Output
- Fully Automated System w/ Remote Tuning Available



## INCLUDES

- Electronic Alignment Adapter
- Signal Converter Box
- Software Package
- User Manual on CD-ROM
- Visual Alignment Aid
- Carrying Case

American Laser Enterprises, LLC.  
 PO Box 309  
 Novi, MI 48376  
 Phone: 248-449-3714  
 Fax: 248-449-7631  
 Email: info@a-l-e.net  
 Web: a-l-e.net



***"A Cut Above The Rest"***



# SPOT-IT ELECTRONIC ALIGNMENT SYSTEM

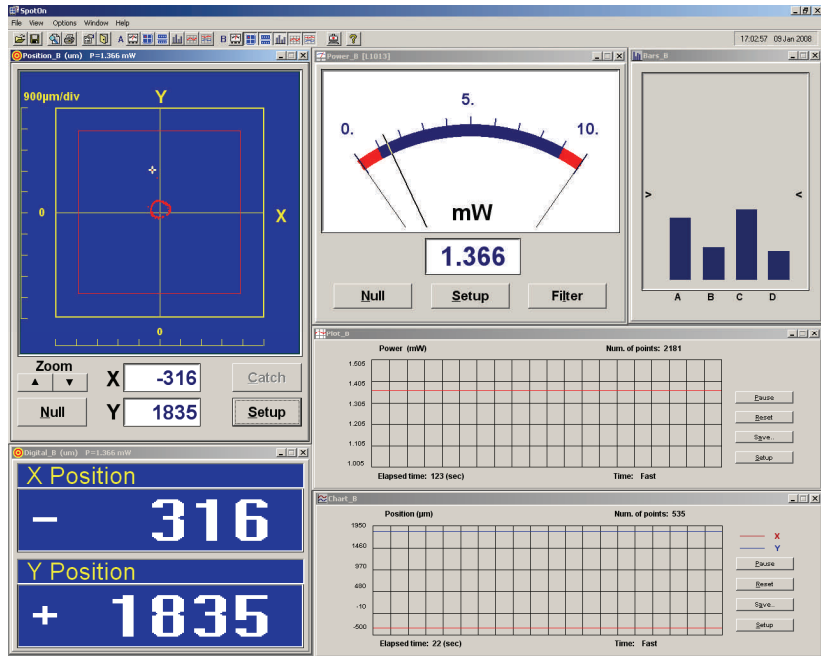
P/N: 190035

## SPECIFICATIONS

- Position Resolution:  $\pm 25\mu\text{m}$
- Position Accuracy:  $\pm 50\mu\text{m}$
- Calibrated Spectral Range: 350 - 1100nm
- Power Range: 10 $\mu\text{W}$  - 2.5mW
- Power Accuracy:  $\pm 5\%$
- Data Refresh Rate: 150Hz

## MINIMUM REQUIREMENTS

- Pentium 4, 2.4 GHz
- 128MB RAM
- 15MB Free Space
- CD-ROM Drive
- Microsoft XP or Vista
- 8MB VGA Graphics Card  
1024X768 Min Resolution
- USB 2.0 Port



American Laser Enterprises, LLC.  
 PO Box 309  
 Novi, MI 48376  
 Phone: 248-449-3714  
 Fax: 248-449-7631  
 Email: info@a-l-e.net  
 Web: a-l-e.net

*"A Cut Above The Rest"*