

## FEEDBACK ISOLATOR Ø2.0" (1.4" CA)

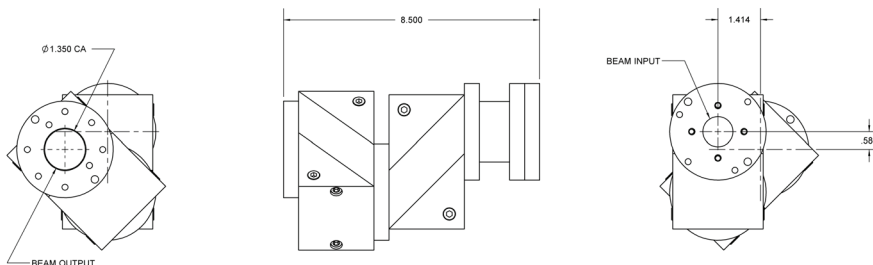
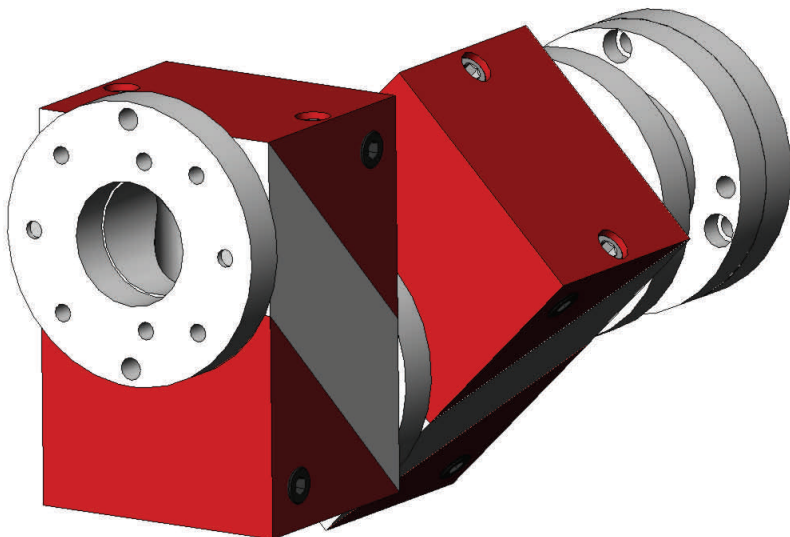
P/N: 200035

### FEATURES

- 1.4"/35mm Clear Aperture
- Enhanced Cut Quality
- Back Reflection Protection
- Indirect Mirror Cooling
- Mounts Directly to Laser
- No Alignment Needed
- Aluminum Construction
- Standard & Custom Mounting

### SPECIFICATIONS

- Mirror Diameter: Ø2.0"/50.8mm
- Cooling Ports: 1/8 NPT
- Weight: 13.0lbs./5.9kg



American Laser Enterprises, LLC.  
PO Box 309  
Novi, MI 48376  
Phone: 248-449-3714  
Fax: 248-449-7631  
Email: [info@a-l-e.net](mailto:info@a-l-e.net)  
Web: [a-l-e.net](http://a-l-e.net)

***"A Cut Above The Rest"***