

CUT QUALITY ENHANCER Ø2.0" (1.4" CA)

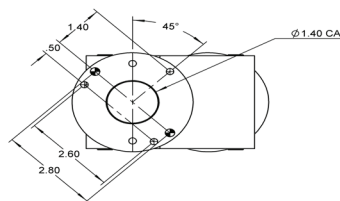
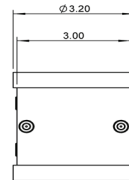
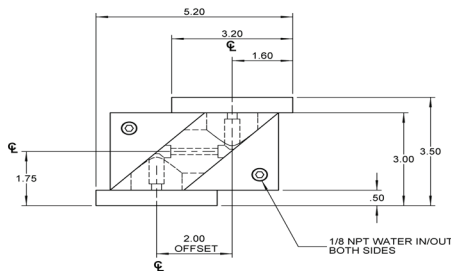
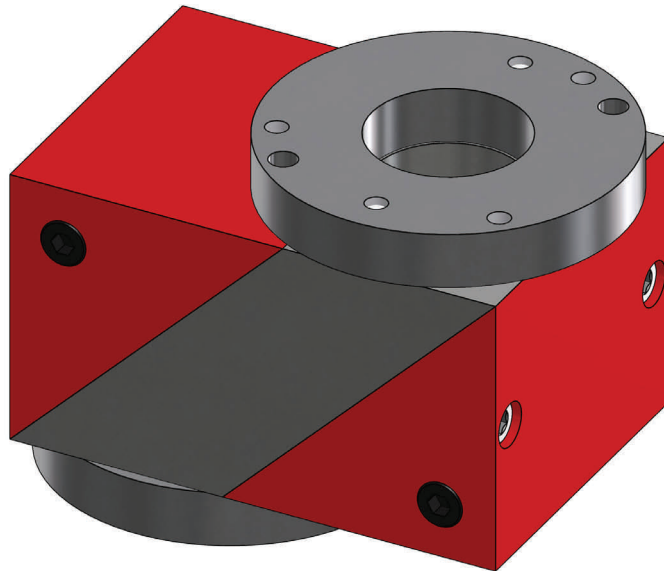
P/N: 200193

FEATURES

- 1.4"/35mm Clear Aperture
- Linear to Circular Polarization
- Indirect Mirror Cooling
- Mounts Directly to Laser
- No Alignment Needed
- Aluminum Construction
- Standard & Custom Mounting

SPECIFICATIONS

- Mirror Diameter: Ø2.0"/50.8mm
- Cooling Ports: 1/8 NPT



American Laser Enterprises, LLC.
PO Box 309
Novi, MI 48376
Phone: 248-449-3714
Fax: 248-449-7631
Email: info@a-l-e.net
Web: a-l-e.net

"A Cut Above The Rest"