

## **CUT QUALITY ENHANCER (1.0" CA)**

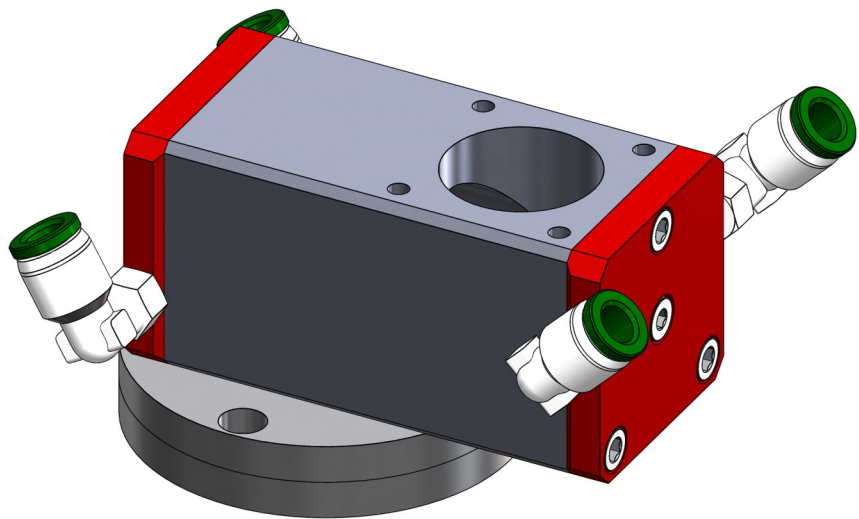
**P/N: 200415**

### **FEATURES**

- 1.0"/25.4mm Clear Aperture
- Linear to Circular Polarization
- Compact Design
- Indirect Mirror Cooling
- Mounts Directly to Laser
- No Alignment Needed
- Aluminum Construction
- Standard & Custom Mounting

### **SPECIFICATIONS**

- Clear Aperture: 1.0"/25.4mm
- Cooling Ports: 10-32



American Laser Enterprises, LLC.  
PO Box 309  
Novi, MI 48376  
Phone: 248-449-3714  
Fax: 248-449-7631  
Email: [info@a-l-e.net](mailto:info@a-l-e.net)  
Web: [a-l-e.net](http://a-l-e.net)

***"A Cut Above The Rest"***